

- NOTES:**
- MEASUREMENTS ARE IN METRES AND DECIMALS THEREOF.
  - SOME MEASUREMENTS ARE APPROXIMATE AND MAY DIFFER FROM THE FINAL PLAN OF SURVEY BY AS MUCH AS 1.0 METRE.
  - PORTION TO BE APPROVED IS OUTLINED WITH A BOLD DASHED LINE AND CONTAINS 1.28 ha (3.17 ac)
  - TYPICAL CORNER CUTOFFS ARE 4.5 METRES.



**CITY OF REGINA APPROVAL**  
 THE SUBDIVISION PROPOSED HEREIN OUTLINED IN A BOLD DASHED LINE IS APPROVED UNDER THE PROVISIONS OF BYLAW NO. 7748-LA-B84 OF THE CITY OF REGINA.

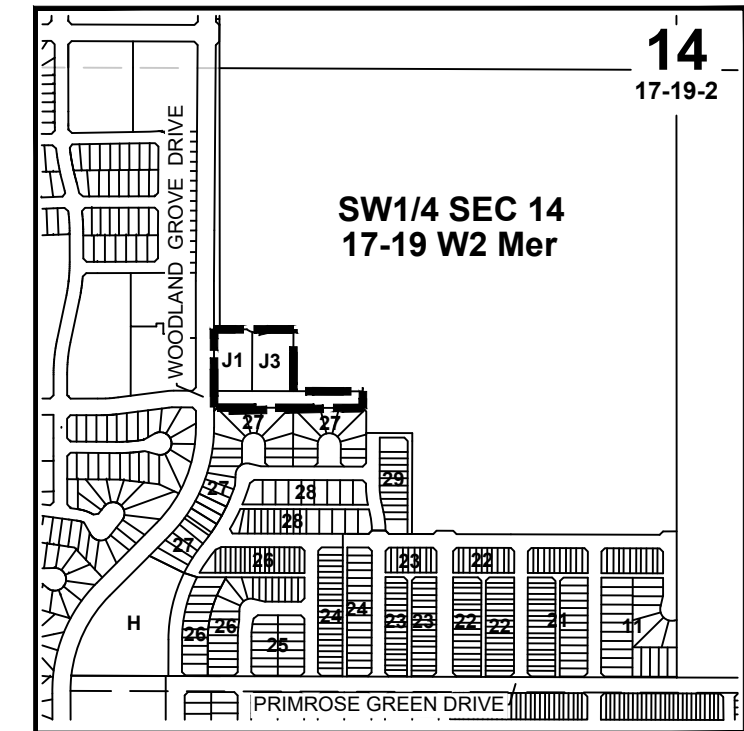
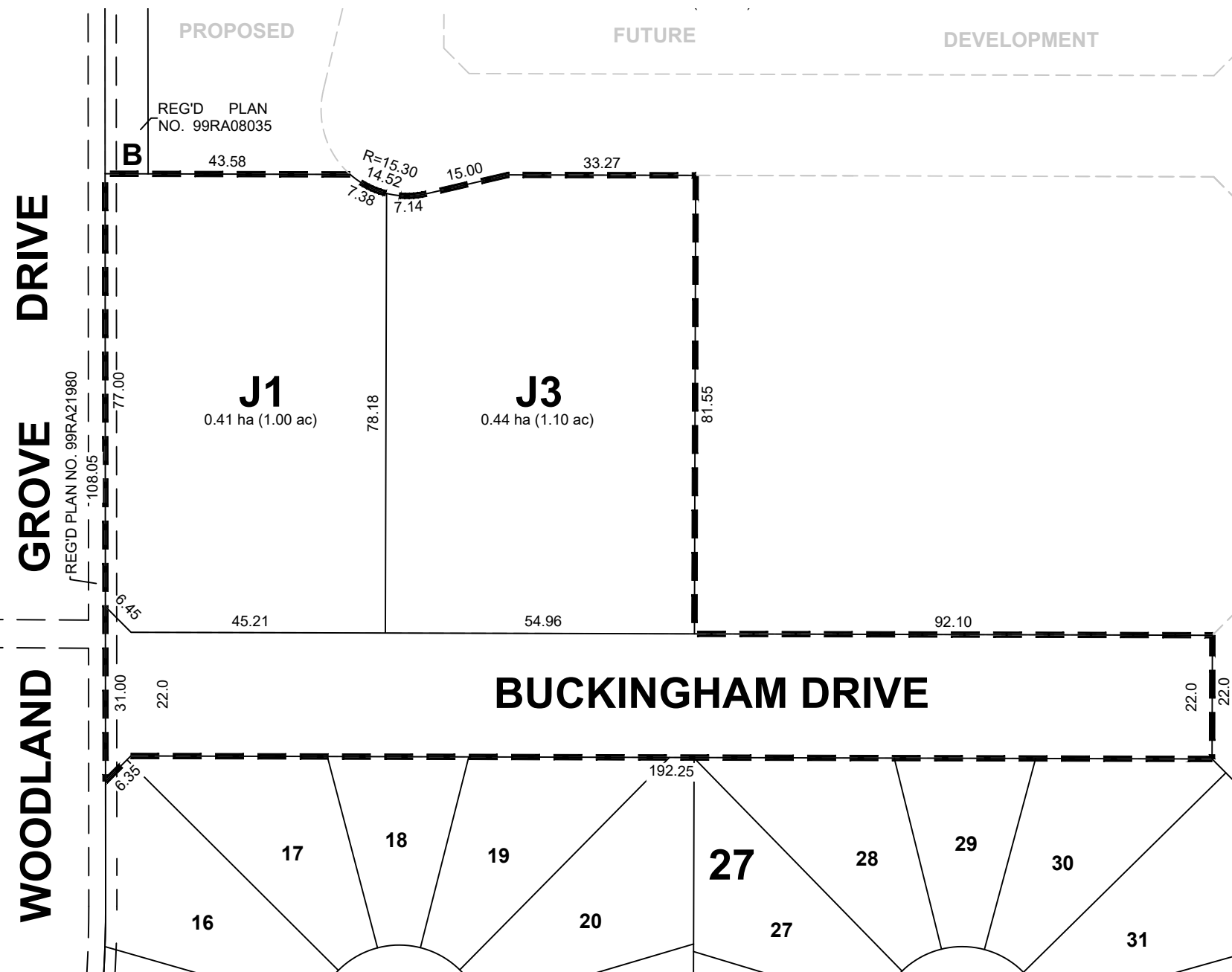
DATED THIS \_\_\_\_ DAY OF \_\_\_\_\_ A.D. 20\_\_.

DATE \_\_\_\_\_ SURESHKUMAR RAJAKUMAR  
 SASKATCHEWAN LAND SURVEYOR

CITY CLERK \_\_\_\_\_

**THE TOWNS - PHASE 1 STAGE 1FA  
 PLAN OF PROPOSED SUBDIVISION  
 OF PART OF  
 PARCEL B, REG'D PLAN No. 99RA08035  
 AND PART OF  
 SW1/4 SEC 14, TWP 17, RGE 19, W2 Mer  
 REGINA, SASKATCHEWAN  
 2020**

SCALE = 1:1000



OWNER:

CITY OF REGINA



RC-0327-17-PPS  
 6/19/2020 12:00 PM