

**THE TOWNS - PHASE I STAGE IB
PLAN OF PROPOSED SUBDIVISION**

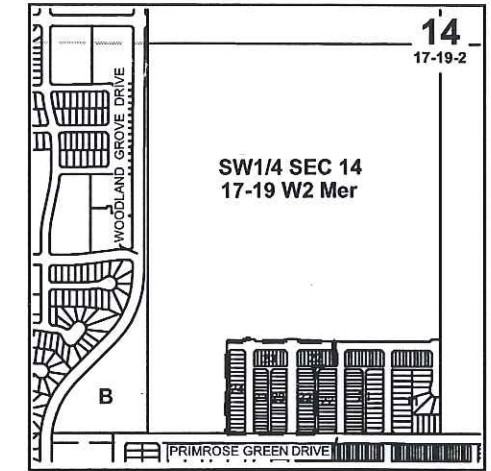
OF PART OF
**SW1/4 SEC 14, TWP 17, RGE 19, W2 Mer
REGINA, SASKATCHEWAN
2015**

SCALE = 1:1000

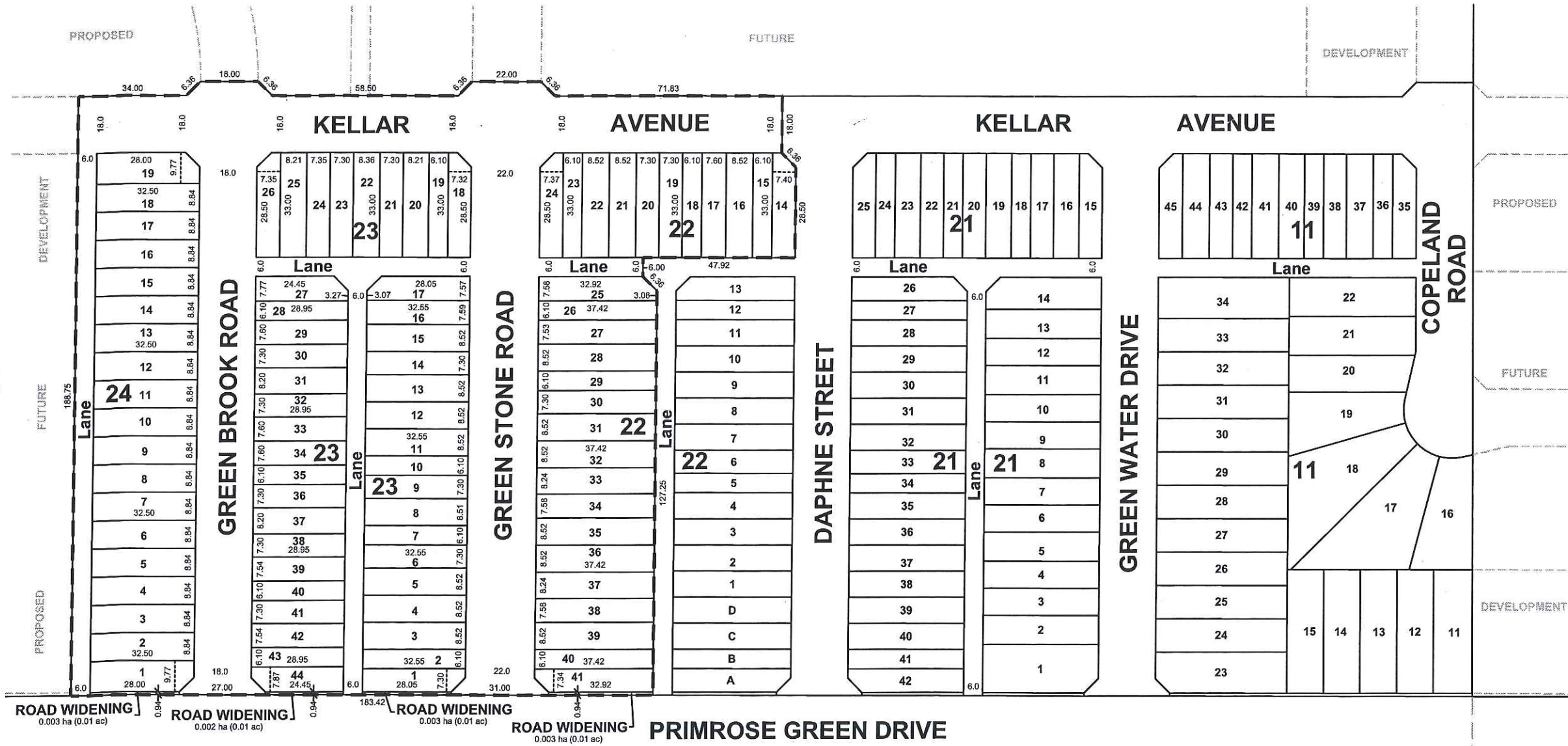
**REDUCED DRAWING
* NOT TO SCALE ***

NOTES:
- MEASUREMENTS ARE IN METRES AND DECIMALS THEREOF.
- SOME MEASUREMENTS ARE APPROXIMATE AND MAY DIFFER FROM THE FINAL PLAN OF SURVEY BY AS MUCH AS 1.0 %.
- PORTION TO BE APPROVED IS OUTLINED WITH A BOLD DASHED LINE AND CONTAINS 3.69 ha (9.13 ac)
- TYPICAL CORNER CUTOFFS ARE 4.5 METRES.
- LOT WIDTHS SHOWN AS 7.40 ARE AT 6 OR 18 METRE SETBACKS.

DATE July 27, 2016
S. Rajakumar
SURESHKUMAR RAJAKUMAR
SASKATCHEWAN LAND SURVEYOR



KEY PLAN



CITY OF REGINA APPROVAL
THE SUBDIVISION PROPOSED HEREIN OUTLINED IN A BOLD DASHED LINE IS APPROVED UNDER THE PROVISIONS OF BYLAW NO. 7748-LA-B84 OF THE CITY OF REGINA.

DATED THIS ___ DAY OF _____ A.D. 20__.

CITY CLERK _____

OWNER: _____

CITY OF REGINA _____

