

**THE TOWNS - PHASE I STAGE IC  
 PLAN OF PROPOSED SUBDIVISION  
 OF PART OF  
 PARCEL B, REG'D PLAN NO. 99RA08035  
 AND PART OF  
 SW1/4 SEC 14, TWP 17, RGE 19, W2 Mer  
 REGINA, SASKATCHEWAN  
 2015**

SCALE = 1:1000

- NOTES:
- MEASUREMENTS ARE IN METRES AND DECIMALS THEREOF.
  - SOME MEASUREMENTS ARE APPROXIMATE AND MAY DIFFER FROM THE FINAL PLAN OF SURVEY BY AS MUCH AS 1.0%.
  - PORTION TO BE APPROVED IS OUTLINED WITH A BOLD DASHED LINE AND CONTAINS 2.20 ha (5.44 ac)
  - TYPICAL CORNER CUTOFFS ARE 4.5 METRES.
  - LOT WIDTHS SHOWN AS ...11.58 ARE AT 8 METRE SETBACKS.

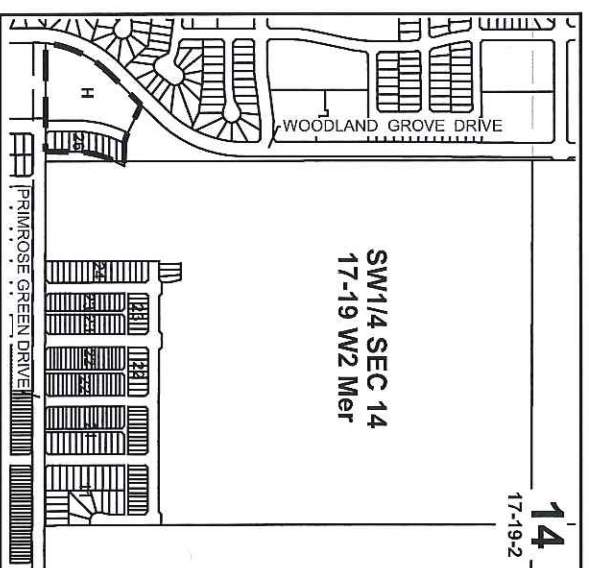


DATE July 21, 2016  
 S. Rajakumar  
 SURESHKUMAR RAJAKUMAR  
 SASKATCHEWAN LAND SURVEYOR

OWNER:

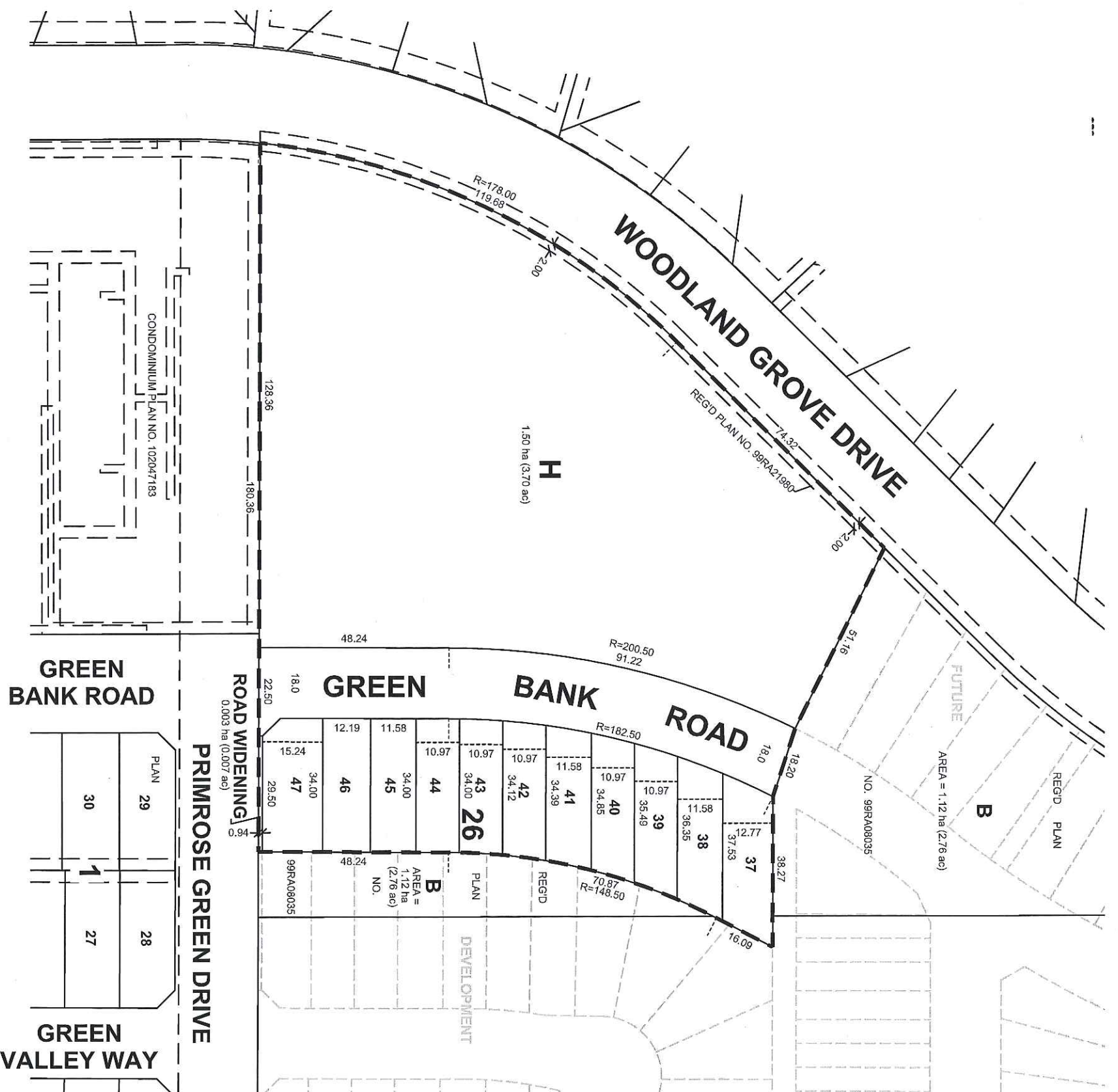
CITY OF REGINA

**REDUCED DRAWING  
 \* NOT TO SCALE \***



**CITY OF REGINA APPROVAL**  
 THE SUBDIVISION PROPOSED HEREIN, OUTLINED IN A BOLD DASHED LINE IS APPROVED UNDER THE PROVISIONS OF BYLAW NO. 7748-LA-884 OF THE CITY OF REGINA.  
 DATED THIS \_\_\_ DAY OF \_\_\_\_\_ A.D. 20\_\_

CITY CLERK \_\_\_\_\_



**GREEN BANK ROAD**

**GREEN VALLEY WAY**

**PRIMROSE GREEN DRIVE**

ROAD WIDENING  
 0.003 ha (0.007 ac)

CONDOMINIUM PLAN NO. 102047183

