

CITY OF REGINA APPROVAL
 THE SUBDIVISION PROPOSED HEREIN OUTLINED IN A BOLD
 DASHED LINE IS APPROVED UNDER THE PROVISIONS OF BYLAW
 NO. 7748-LA-B84 OF THE CITY OF REGINA.

DATED THIS _____ DAY OF _____ A.D. 20__.

CITY CLERK _____

OWNER: _____

CITY OF REGINA _____

NOTES:

- MEASUREMENTS ARE IN METRES AND DECIMALS THEREOF.
- SOME MEASUREMENTS ARE APPROXIMATE AND MAY DIFFER FROM THE FINAL PLAN OF SURVEY BY AS MUCH AS 1.0 %.
- PORTION TO BE APPROVED IS OUTLINED WITH A BOLD DASHED LINE AND CONTAINS 2.57 ha (6.35 ac)
- TYPICAL CORNER CUTOFFS ARE 4.5 METRES.
- LOT WIDTHS SHOWN AS 10.97 ARE AT 6 OR 18 METRE SETBACKS.

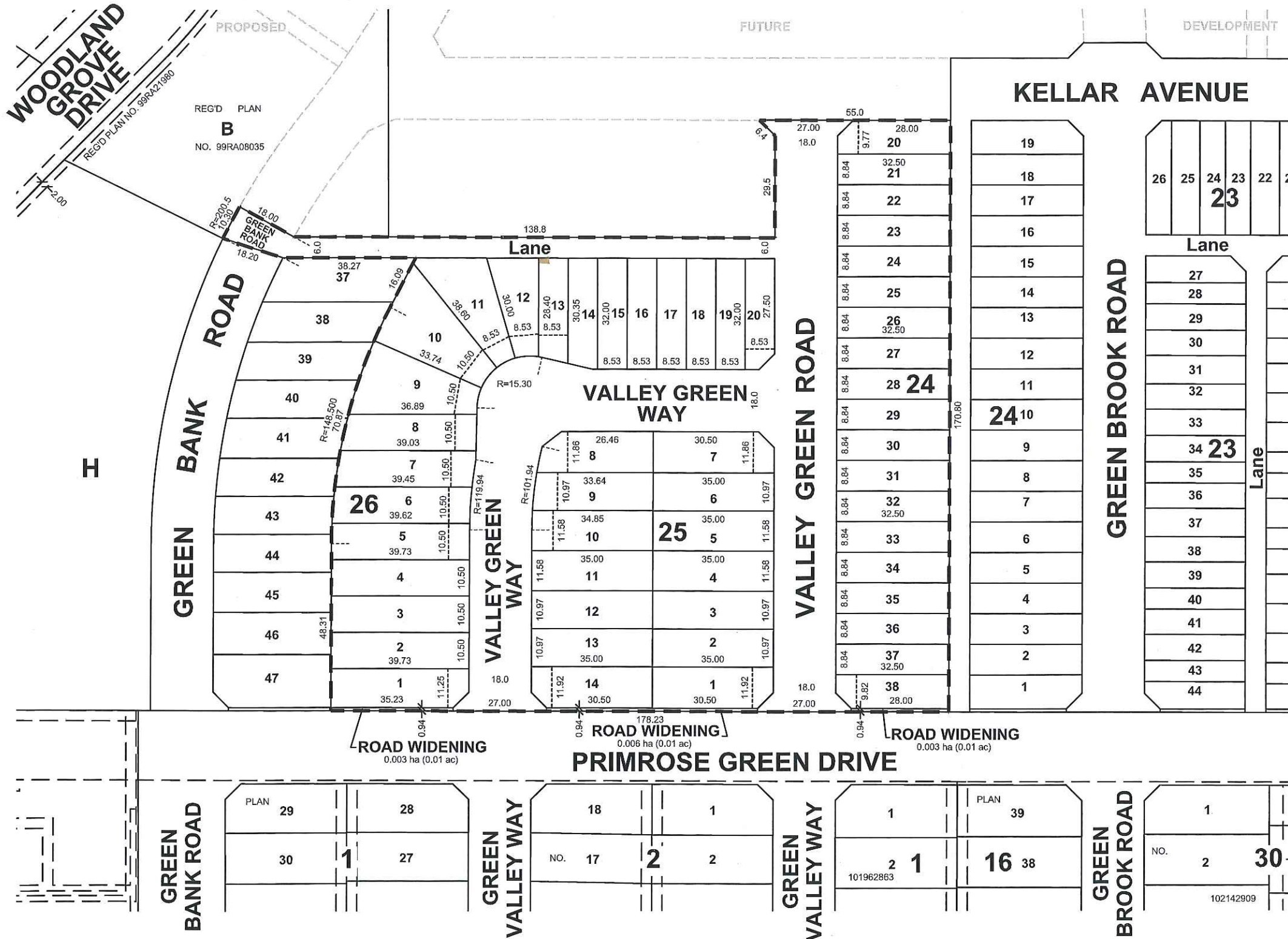
DEC/07/2016
 DATE

S. Rajakumar
 SURESHKUMAR RAJAKUMAR
 SASKATCHEWAN LAND SURVEYOR



**THE TOWNS - PHASE 1 STAGE 1D
 PLAN OF PROPOSED SUBDIVISION**
 OF PART OF
PARCEL B, REG'D PLAN No. 99RA08035
 AND PART OF
SW1/4 SEC 14, TWP 17, RGE 19, W2 Mer
REGINA, SASKATCHEWAN
2016

SCALE = 1:1000



**REDUCED DRAWING
 * NOT TO SCALE ***

