

**THE TOWNS - PHASE 1 STAGE 1E
PLAN OF PROPOSED SUBDIVISION**

**OF PART OF
PARCEL B, REG'D PLAN No. 99RA08035
AND PART OF
SW1/4 SEC 14, TWP 17, RGE 19, W2 Mer
REGINA, SASKATCHEWAN
2016**

SCALE = 1:1000

- NOTES:**
- MEASUREMENTS ARE IN METRES AND DECIMALS THEREOF.
 - SOME MEASUREMENTS ARE APPROXIMATE AND MAY DIFFER FROM THE FINAL PLAN OF SURVEY BY AS MUCH AS 1.0 %.
 - PORTION TO BE APPROVED IS OUTLINED WITH A BOLD DASHED LINE AND CONTAINS 3.89 ha (9.60 ac)
 - TYPICAL CORNER CUTOFFS ARE 4.5 METRES.
 - LOT WIDTHS SHOWN AS 10.97 ARE AT 6 OR 18 METRE SETBACKS.



DATE January, 09, 2017 S. Rajakumar
SURESHKUMAR RAJAKUMAR
SASKATCHEWAN LAND SURVEYOR

**REDUCED DRAWING
* NOT TO SCALE ***

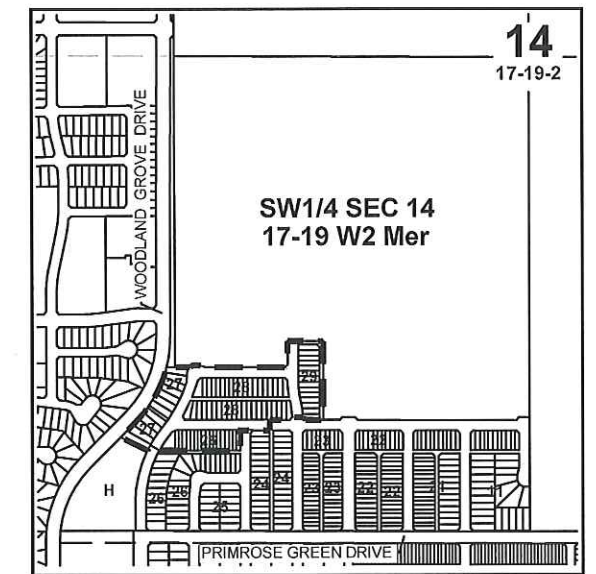
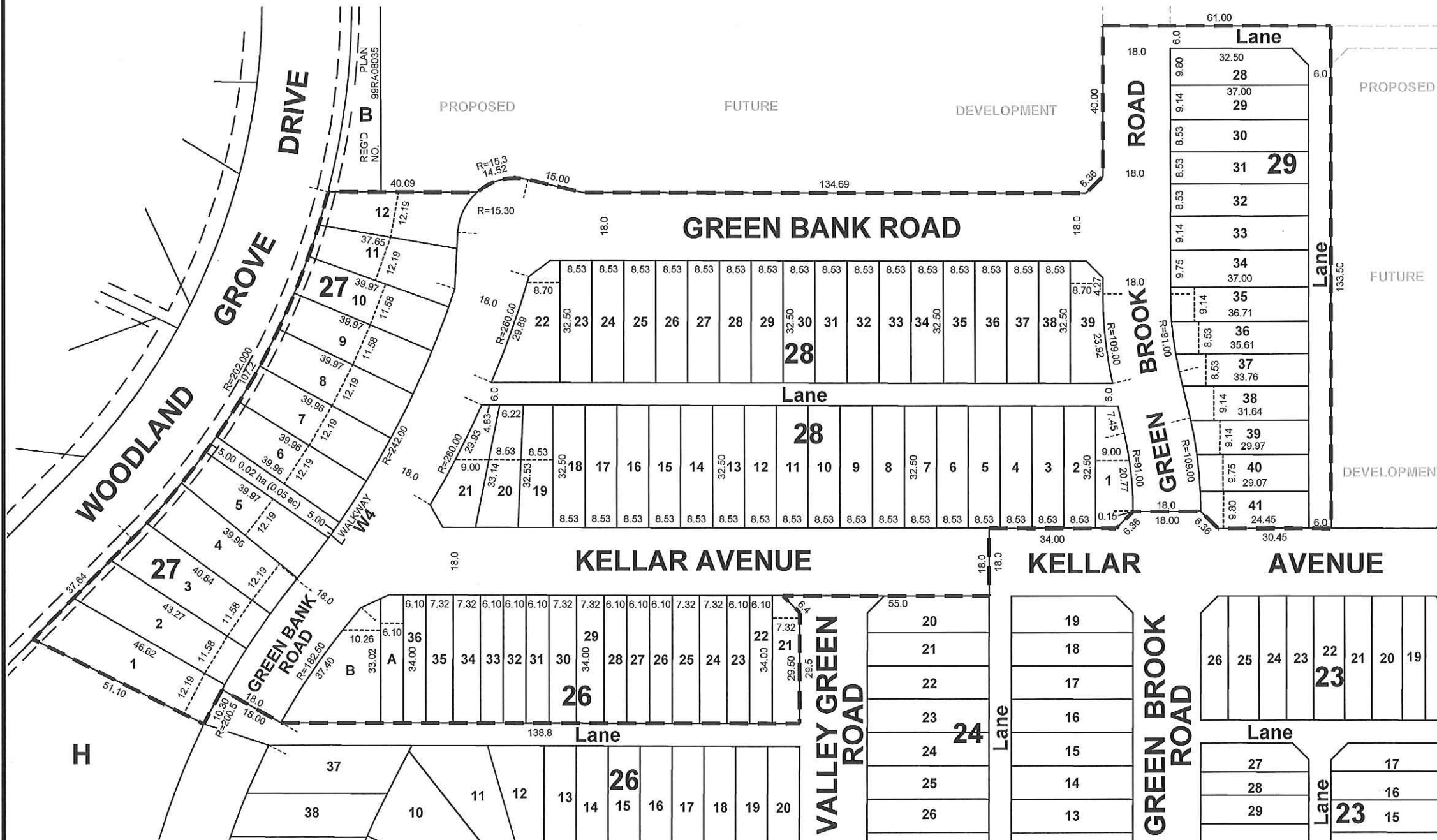
CITY OF REGINA APPROVAL
THE SUBDIVISION PROPOSED HEREIN OUTLINED IN A BOLD DASHED LINE IS APPROVED UNDER THE PROVISIONS OF BYLAW NO. 7748-LA-B84 OF THE CITY OF REGINA.

DATED THIS _____ DAY OF _____ A.D. 20__

CITY CLERK _____

OWNER: _____

CITY OF REGINA _____



KEY PLAN



RC-0409-15-PPS
1/9/2017 12:03 PM