

- NOTES:**
- MEASUREMENTS ARE IN METRES AND DECIMALS THEREOF.
  - SOME MEASUREMENTS ARE APPROXIMATE AND MAY DIFFER FROM THE FINAL PLAN OF SURVEY BY AS MUCH AS 1.0 %.
  - PORTION TO BE APPROVED IS OUTLINED WITH A BOLD DASHED LINE AND CONTAINS 1.56 ha (3.86 ac)
  - TYPICAL CORNER CUTOFFS ARE 4.5 METRES.
  - LOT WIDTHS SHOWN AS 9.50 ARE AT 6 METRE SETBACKS.



**CITY OF REGINA APPROVAL**

THE SUBDIVISION PROPOSED HEREIN OUTLINED IN A BOLD DASHED LINE IS APPROVED UNDER THE PROVISIONS OF BYLAW NO. 7748-LA-B84 OF THE CITY OF REGINA.

DATED THIS \_\_\_\_ DAY OF \_\_\_\_\_ A.D. 20\_\_.

Nov-30-2017

DATE

*S. Rajakumar*

SURESHKUMAR RAJAKUMAR  
SASKATCHEWAN LAND SURVEYOR

CITY CLERK

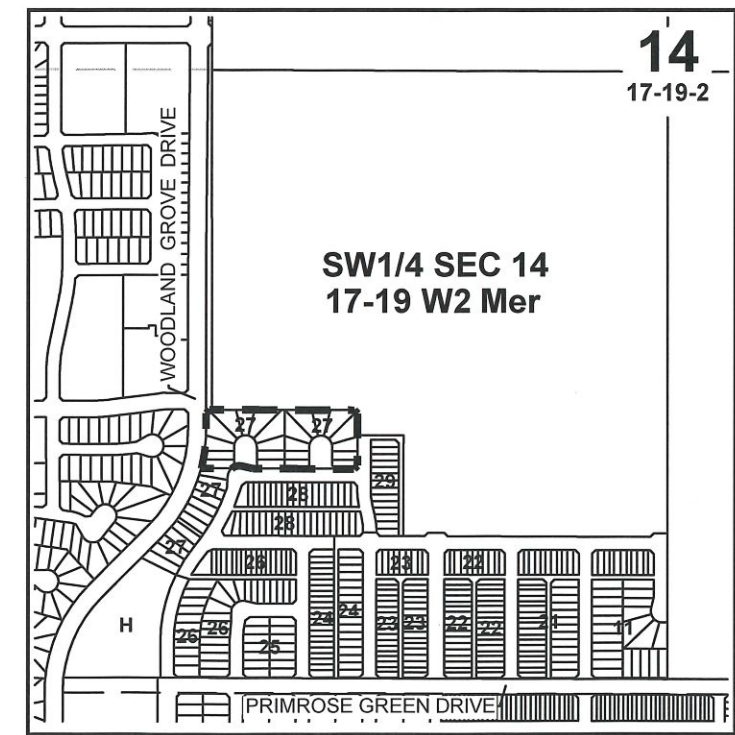
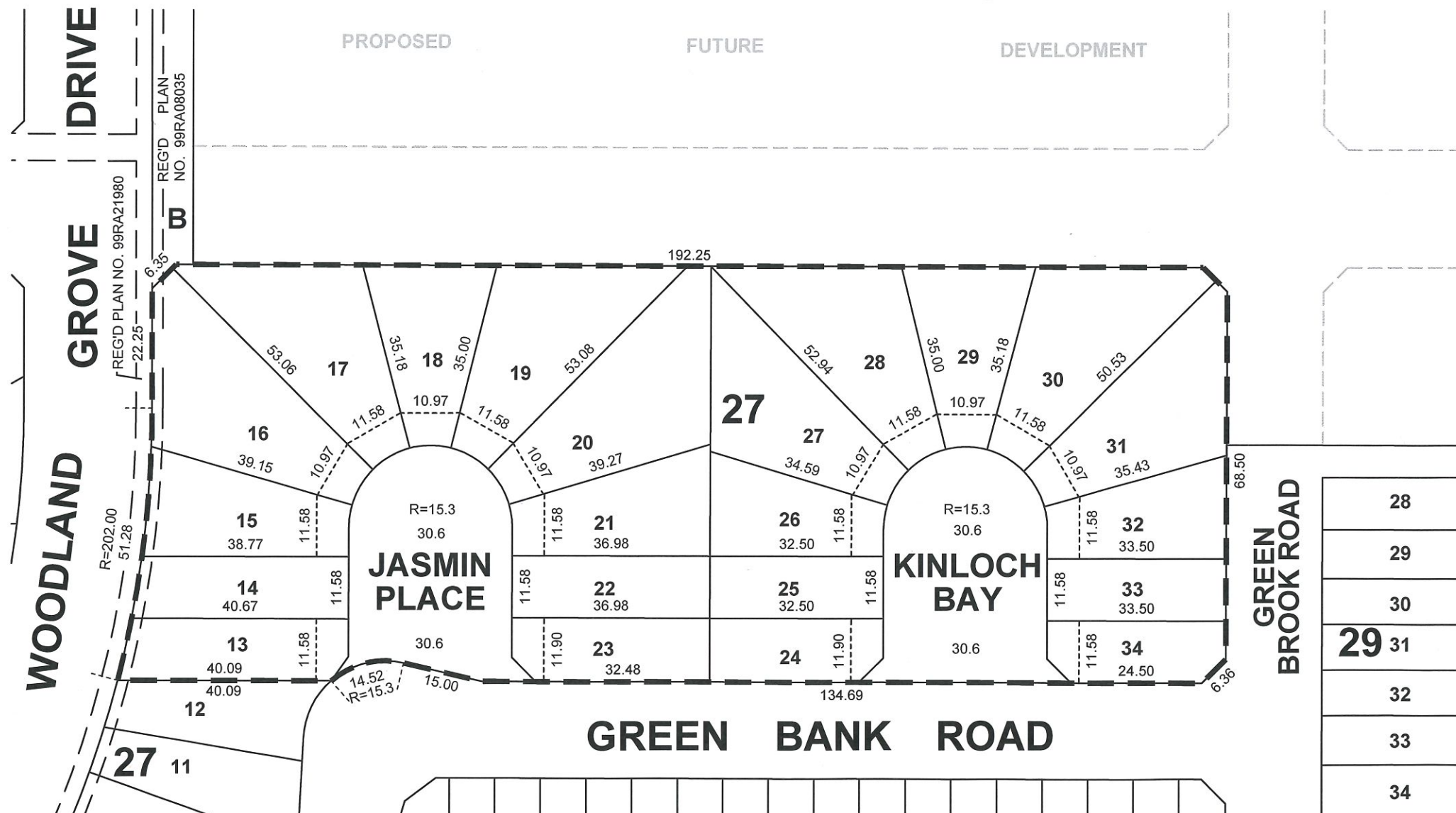
**THE TOWNS - PHASE 1 STAGE 1F  
PLAN OF PROPOSED SUBDIVISION**

OF PART OF  
**PARCEL B, REG'D PLAN No. 99RA08035**  
AND PART OF  
**SW1/4 SEC 14, TWP 17, RGE 19, W2 Mer**  
**REGINA, SASKATCHEWAN**  
**2017**

SCALE = 1:1000

OWNER:

CITY OF REGINA



KEY PLAN



RC-0314-16-PPS  
11/30/2017 11:17 AM