

**THE TOWNS - PHASE 1 STAGE 1H
PLAN OF PROPOSED SUBDIVISION**

OF PART OF
**SW1/4 SEC 14, TWP 17, RGE 19, W2 Mer
REGINA, SASKATCHEWAN
2017**

SCALE = 1:1000

NOTES:
- MEASUREMENTS ARE IN METRES AND DECIMALS THEREOF.
- SOME MEASUREMENTS ARE APPROXIMATE AND MAY DIFFER FROM THE FINAL PLAN OF SURVEY BY AS MUCH AS 1.0 %.
- PORTION TO BE APPROVED IS OUTLINED WITH A BOLD DASHED LINE AND CONTAINS 6.25 ha (15.45 ac)
- TYPICAL CORNER CUTOFFS ARE 4.5 METRES.
- LOT WIDTHS SHOWN AS 7.34 ARE AT 6 METRE & 18 METRE SETBACKS.

Feb-02-2021

DATE

SURESHKUMAR RAJAKUMAR
SASKATCHEWAN LAND SURVEYOR



OWNER:

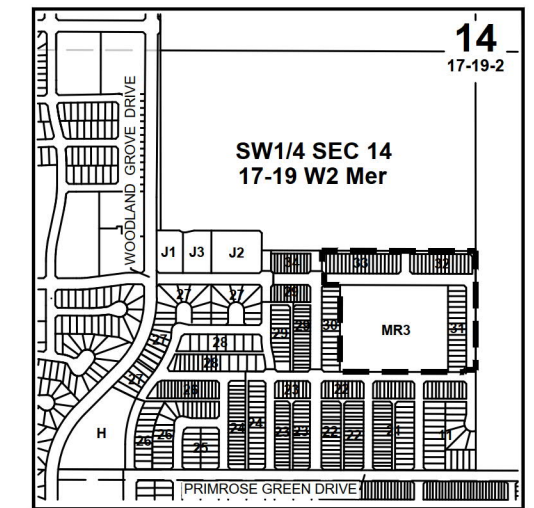
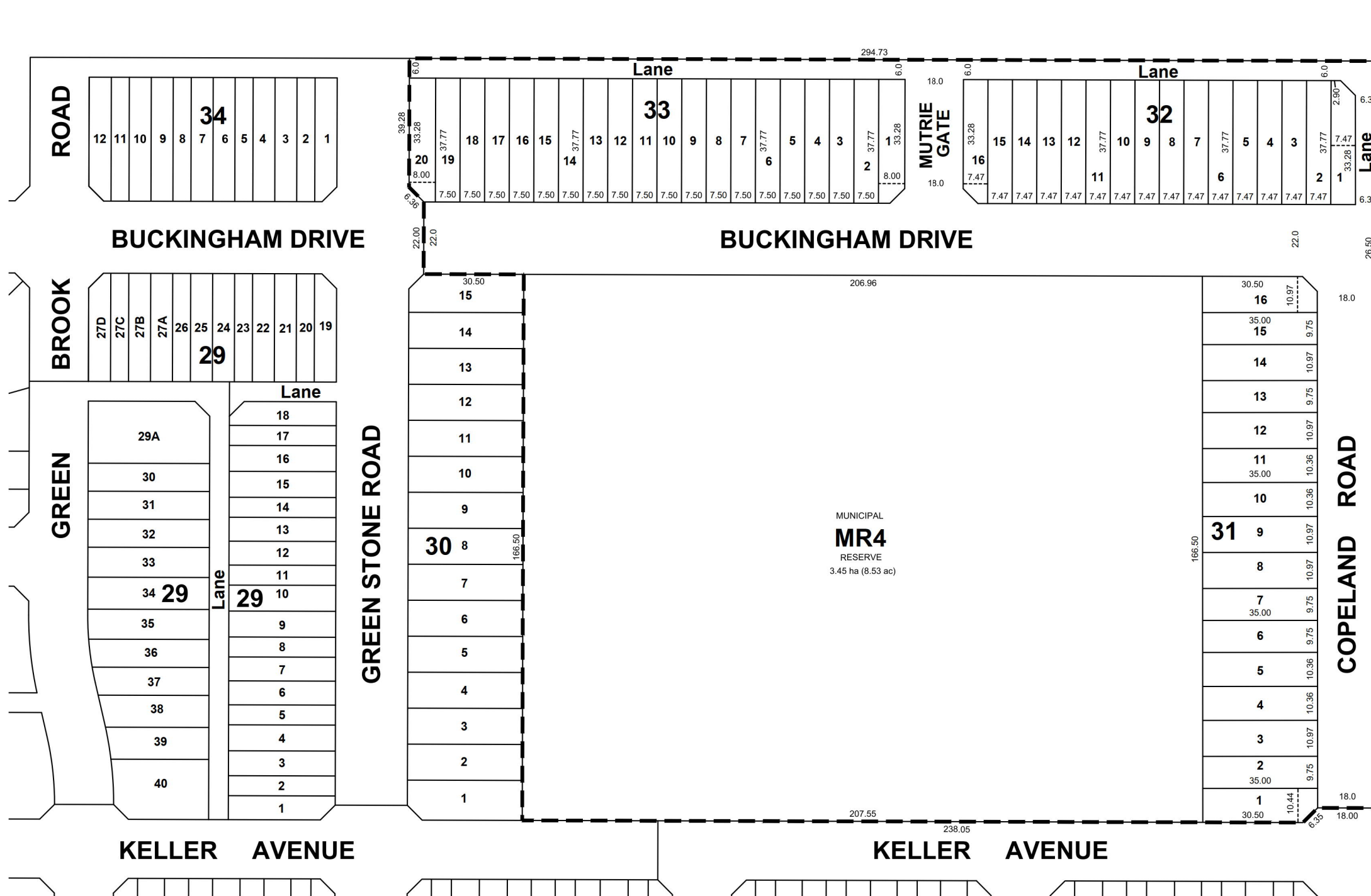
CITY OF REGINA

CITY OF REGINA APPROVAL

THE SUBDIVISION PROPOSED HEREIN OUTLINED IN A BOLD DASHED LINE IS APPROVED UNDER THE PROVISIONS OF BYLAW NO. 7748-LA-B84 OF THE CITY OF REGINA.

DATED THIS ____ DAY OF _____, A.D. 20__.

CITY CLERK



**REDUCED DRAWING
* NOT TO SCALE ***