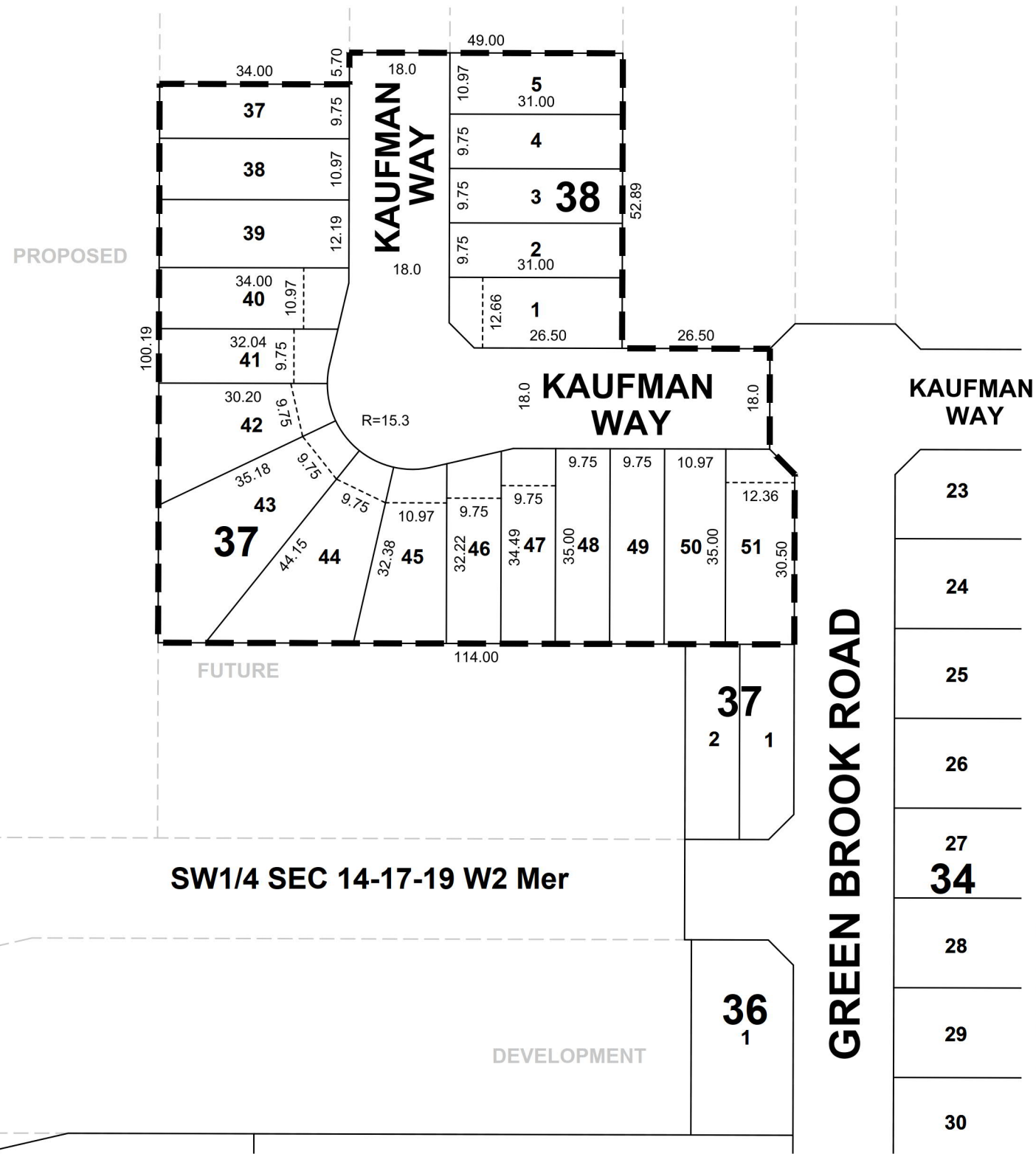


THE TOWNS - PHASE 2 STAGE 3A PLAN OF PROPOSED SUBDIVISION

OF PART OF
SW1/4 SEC 14, TWP 17, RGE 19, W2 Mer
REGINA, SASKATCHEWAN
2021

SCALE = 1:1000



23
24
25
26
27
34
28
29
30

CITY OF REGINA APPROVAL
THE SUBDIVISION PROPOSED HEREIN OUTLINED IN A BOLD DASHED LINE IS APPROVED UNDER THE PROVISIONS OF BYLAW NO. 7748-LA-B84 OF THE CITY OF REGINA.

DATED THIS ____ DAY OF _____ A.D. 20__.

CITY CLERK

OWNER:

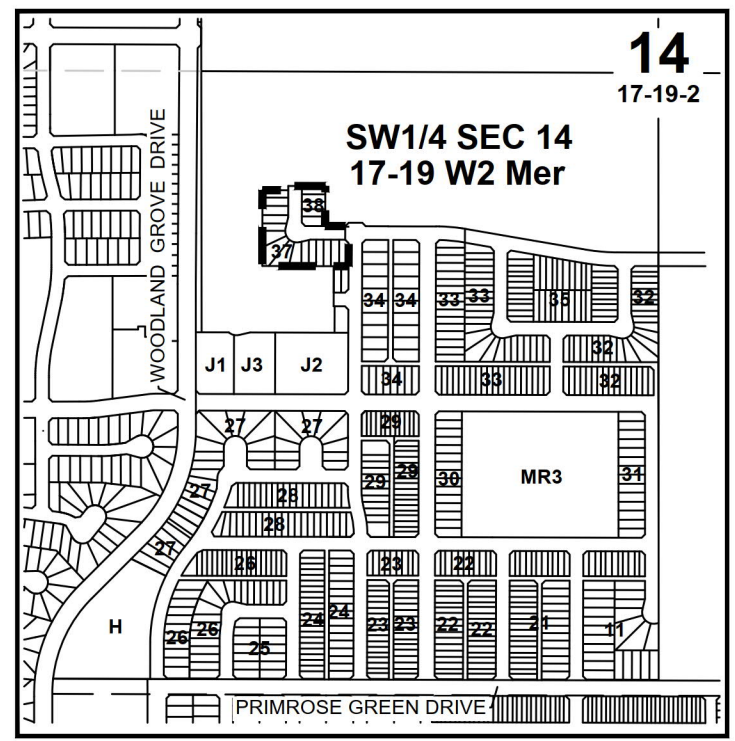
CITY OF REGINA

- NOTES:**
- MEASUREMENTS ARE IN METRES AND DECIMALS THEREOF.
 - SOME MEASUREMENTS ARE APPROXIMATE AND MAY DIFFER FROM THE FINAL PLAN OF SURVEY BY AS MUCH AS 1.0 %.
 - PORTION TO BE APPROVED IS OUTLINED WITH A BOLD DASHED LINE AND CONTAINS 1.02 ha (2.51 ac)
 - TYPICAL CORNER CUTOFFS ARE 4.5 METRES.
 - LOT WIDTHS SHOWN AS 8.53 ARE AT 6 METRE SETBACKS.

January 28th, 2022

DATE

S. Rajakumar
SURESHKUMAR RAJAKUMAR
SASKATCHEWAN LAND SURVEYOR



KEY PLAN



RC-0004-21-PPS-1
1/27/2022 10:21 AM