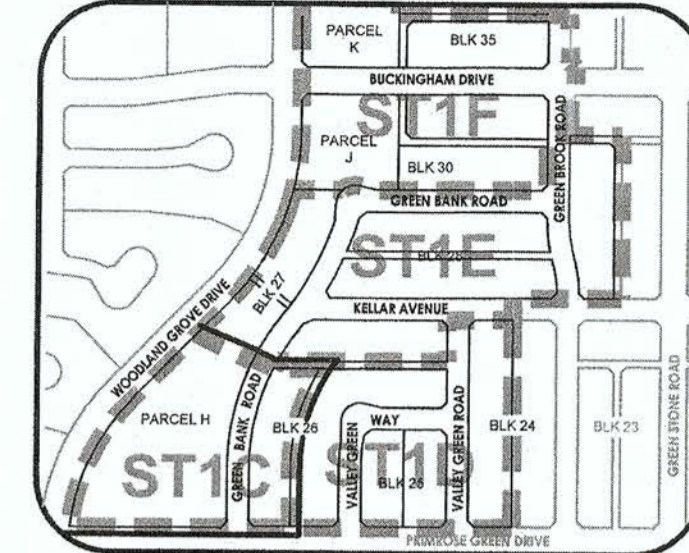
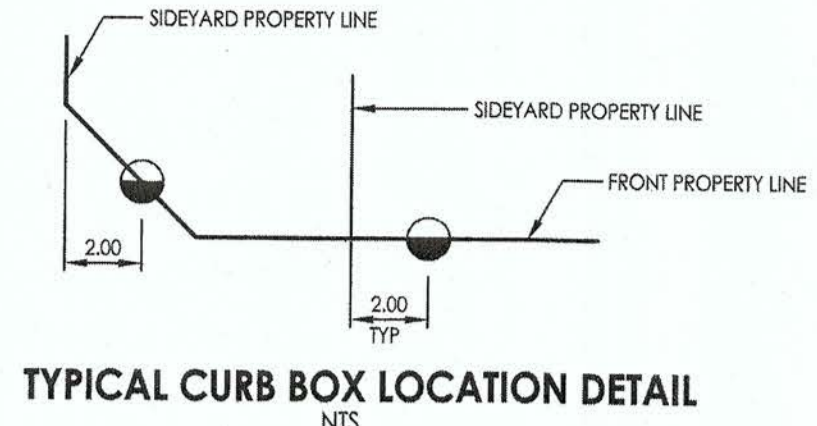
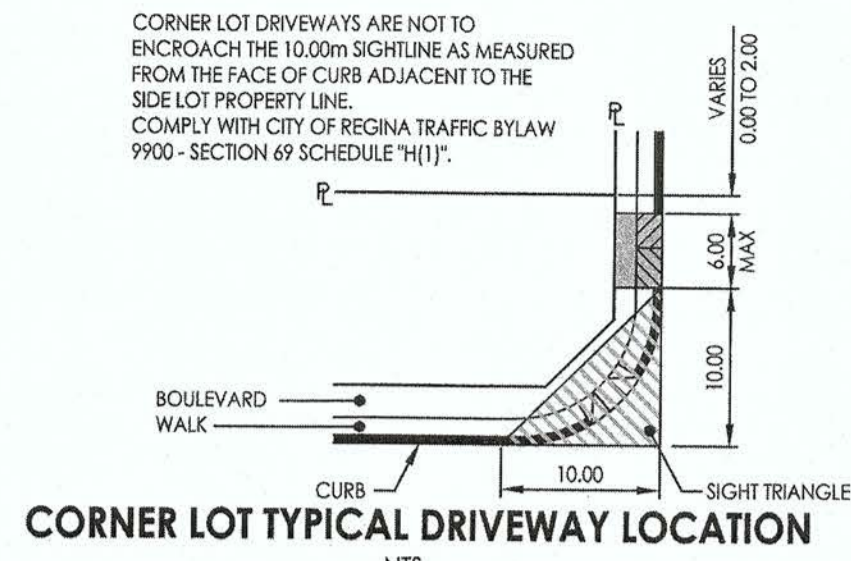
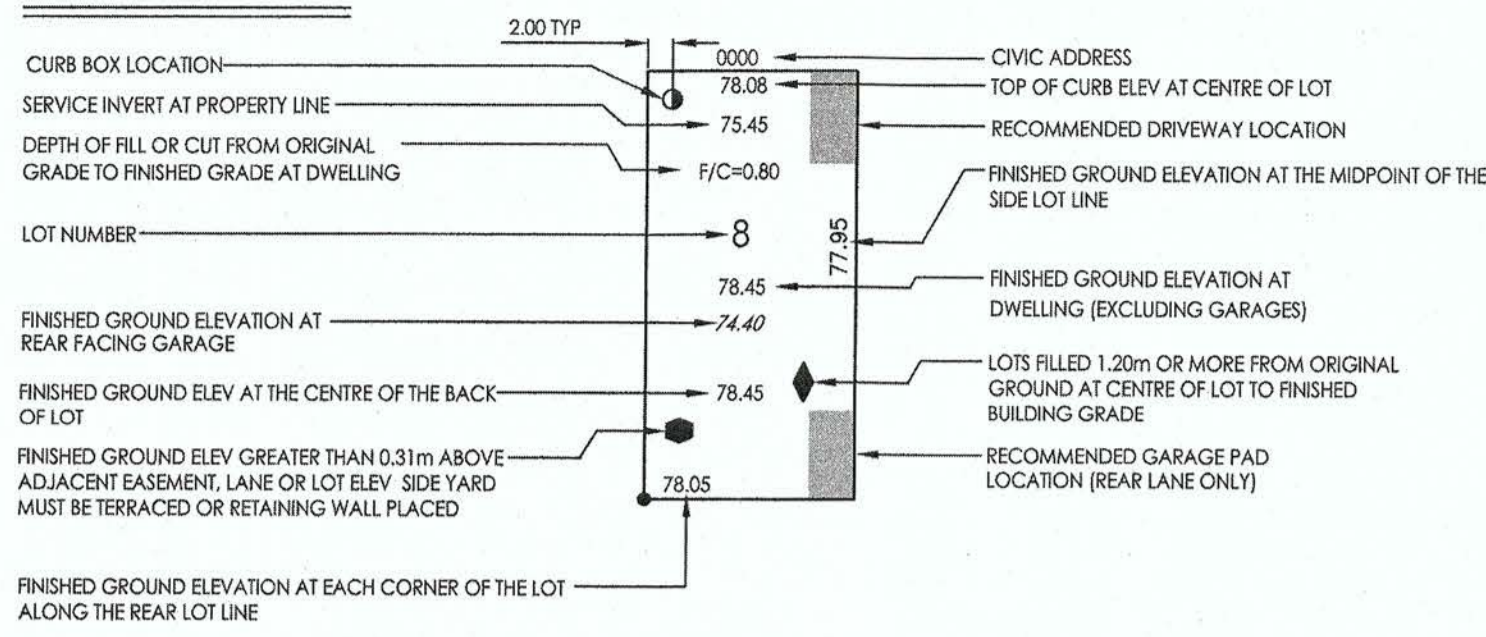


LOT LEGEND



SERVICE CONNECTIONS

CURB BOXES SHALL BE LOCATED:
 a) 2.00m FROM THE SIDEYARD PROPERTY LINE FURTHEST FROM THE DRIVEWAY ALONG THE FRONT PROPERTY LINE OR AS NOTED.
 b) CORNER LOTS - 2.00m FROM THE INTERSECTION OF THE EXTENSION OF THE FRONT PROPERTY AND THE SIDEYARD PROPERTY LINE FURTHEST FROM THE DRIVEWAY ALONG THE FRONT PROPERTY LINE OR AS NOTED.

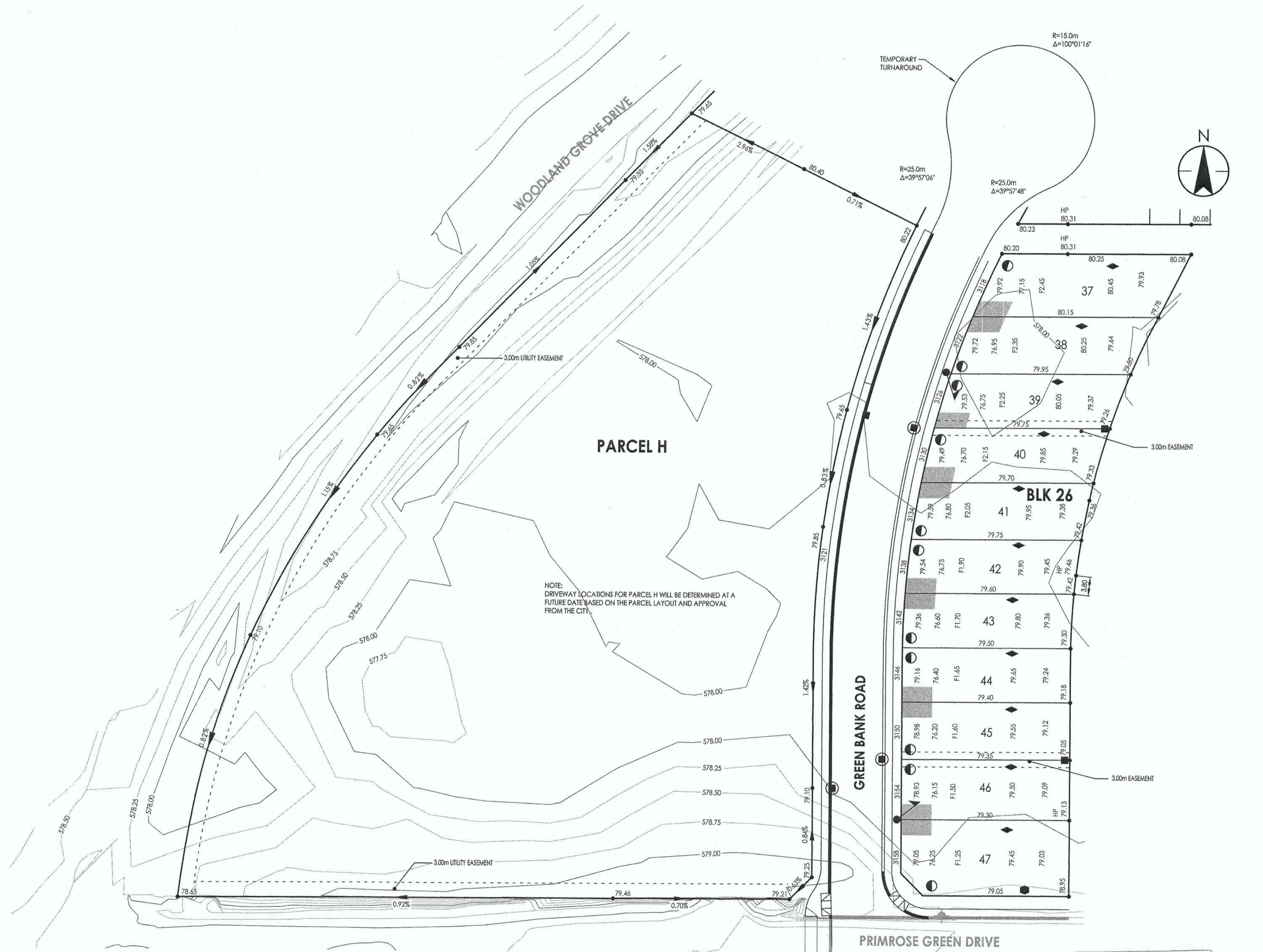
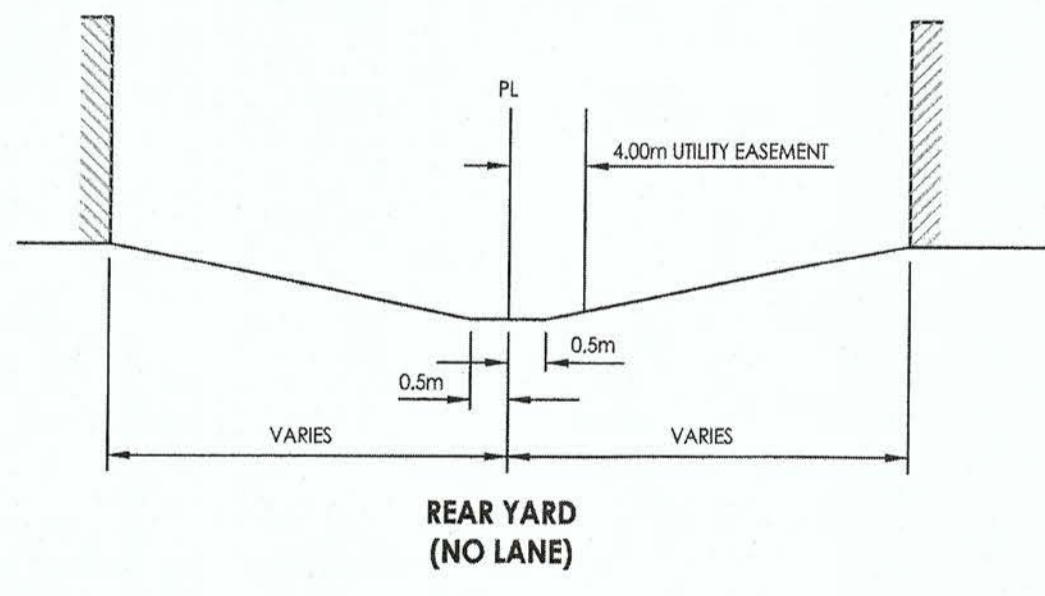
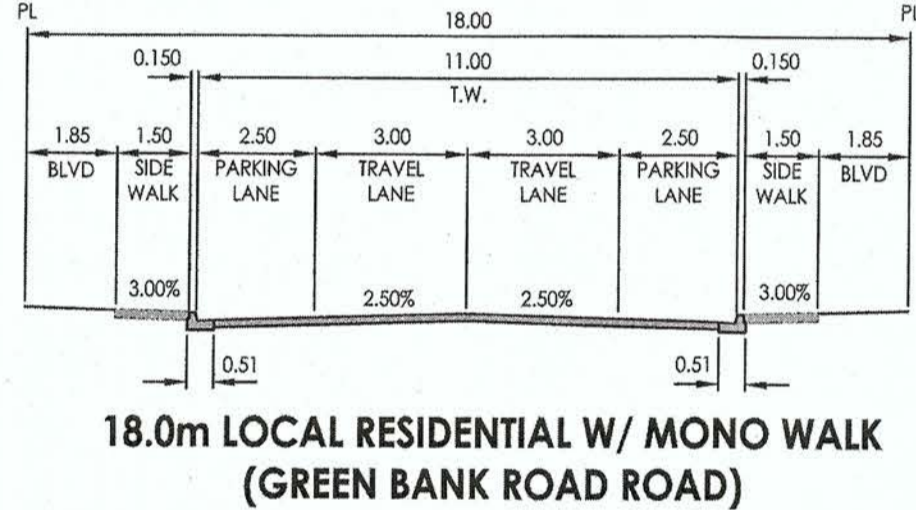
SEWER CONNECTIONS TO BE 150mm Ø PVC
 WATER CONNECTIONS TO BE 25mm Ø COPPER (TYPE K).

NOTE

IF BASEMENT EXCAVATION DOES NOT EXCEED THE FILL SHOWN ON THE BUILDING GRADE PLAN, THE BOTTOM OF THE EXCAVATION MUST BE TESTED TO DETERMINE THE BEARING CAPACITY. THIS TEST WILL BE DONE BY CONTACTING TERRA DEVELOPMENTS INC. 306-924-0445.

BENCH MARK

78V1257 GEODETIC DATUM
 NORTHING 5584478.594, EASTING 533657.461
 ELEVATION 575.853
 AUGER PIPE WITH BRASS CAP, AT NORTHEAST CORNER OF SECTION 3-17-19, 0.9 KM SOUTH OF HIGHWAY 33, 3.1M WEST OF CENTRE LINE OF SECTION ROAD, 20CM BELOW GROUND LEVEL. ESTABLISHED BY SASKATCHEWAN CENTRAL SURVEY AND MAP.



STANTEC CONSULTING LTD.
 400 - 1820 Hamilton Street
 Regina, SK Canada S4P 2B8
 Tel. 306.781.6350
 Fax. 306.359.0233
 www.stantec.com

Copyright Reserved
 The Contractor shall verify and be responsible for all dimensions. DO NOT scale the drawing - any errors or omissions shall be reported to Stantec without delay.
 The Copyrights to all designs and drawings are the property of Stantec. Reproduction or use for any purpose other than that authorized by Stantec is forbidden.

Utility Disclaimer
 Location of existing utilities as shown may not be exact or may be incomplete. Contractor to verify exact location of all utilities with appropriate authorities prior to starting construction.
 The developer and the consultant assume no responsibility for any utilities damaged during construction.

Legend

[Symbol]	SIDEWALK WITH BARRIER CURB
[Symbol]	SIDEWALK WITH ROLLED CURB
[Symbol]	BARRIER CURB
[Symbol]	ROLLED CURB
[Symbol]	ORIGINAL CONTOURS
[Symbol]	BURIED SASKPOWER LINE
[Symbol]	BURIED GAS LINE
[Symbol]	BURIED SASKTEL LINE
[Symbol]	SASKPOWER TRANSFORMER
[Symbol]	SASKPOWER PEDESTAL
[Symbol]	SASKTEL PEDESTAL
[Symbol]	CATV PEDESTAL
[Symbol]	CATCHBASIN/MANHOLE
[Symbol]	CATCHBASIN
[Symbol]	FIRE HYDRANT
[Symbol]	STREET LIGHT
[Symbol]	SUPER MAIL BOX
[Symbol]	HP
[Symbol]	HIGH POINT
[Symbol]	SERVICE LOCATION
[Symbol]	EXISTING SERVICE LOCATION
[Symbol]	SERVICE STUBBED 3.00m INTO PROPERTY

Notes

- ALL MATERIALS AND CONSTRUCTION TO COMPLY WITH CURRENT CITY OF REGINA STANDARD CONSTRUCTION SPECIFICATIONS AND DETAILS.
- ADD 500m FOR GEODETIC ELEVATION.

2	REMOVE PARCEL H DRIVEWAYS	MS	KC	17.06.05
1	REVISE ADDRESSING & GRADES	MS	KC	17.03.23
Revision				
		By	Appd.	YY.MM.DD
C	FOR APPROVAL	BP	KC	16.06.08
B	FOR TENDER	JF	KC	16.04.20
A	FOR 90% REVIEW	JF	KC	16.01.15
Issued				
		By	Appd.	YY.MM.DD

Permit-Seal
 Association of Professional Engineers & Geoscientists of Saskatchewan
 CERTIFICATE OF AUTHORIZATION
 STANTEC CONSULTING LTD.
 Number C0969
 Permission to Consult held by:
 Discipline: Sk. Reg. No. Signature: 17 06 05
 Mun. Eng. 14716 *Karen Corbett* K.L. COSSITT MEMBER 14718
 SASKATCHEWAN

Client/Project
 TERRA DEVELOPMENTS INC.
 THE TOWNS
 PHASE 1 - STAGE 1C
 SITE SERVICES
 Regina, Saskatchewan

Title
 LOT GRADING

Project No.	1131-01210	Scale	1:50
Drawing No.	C-2	Sheet	2 of 9
		Revision	2

CITY OF REGINA
 Design Reviewed
 Date: June 20, 2017
 Per: *[Signature]*
 Development Services Department
 Development Engineering Branch

V:\1131\active\113101210\design\drawing\City Ph2_C.D.E.\Drawings\PHASE 1C\SERVICING\dwg\cph1_L02.dwg
 Pldate: 2017.06.09 11:17 AM Login: sweeni, Mark
 ORIGINAL SHEET - ANS D