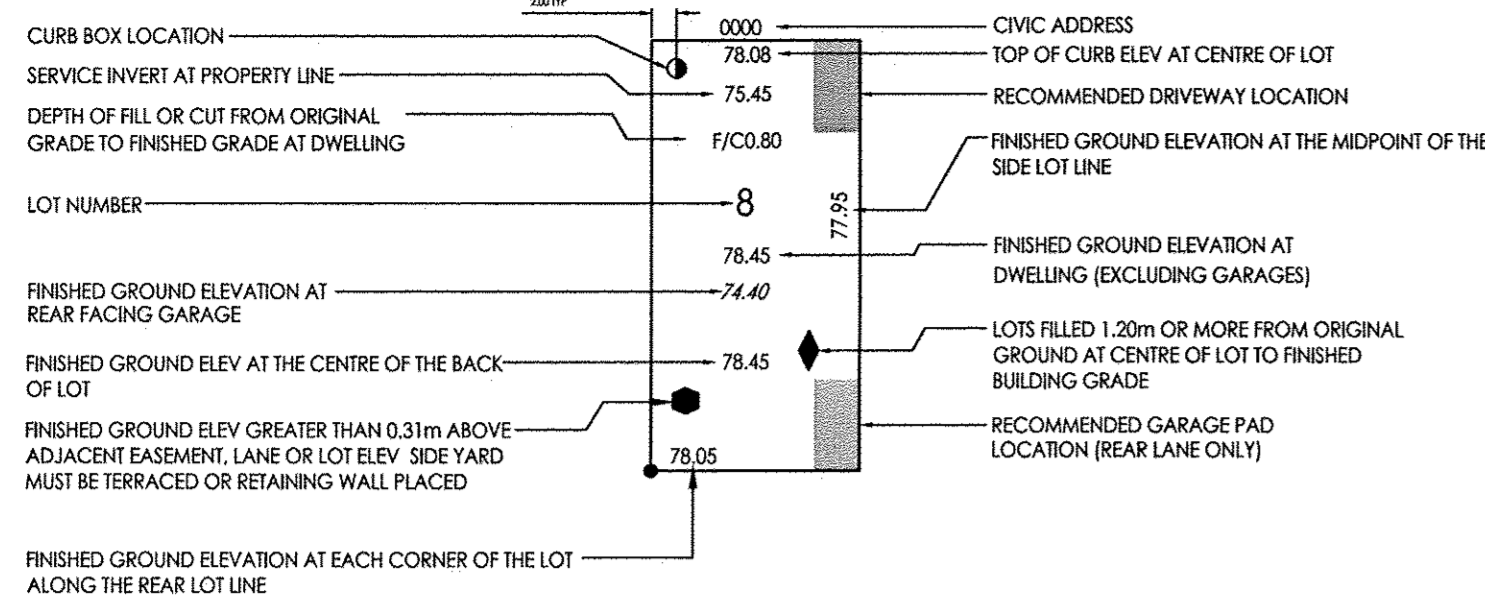


LOT LEGEND



SERVICE CONNECTIONS

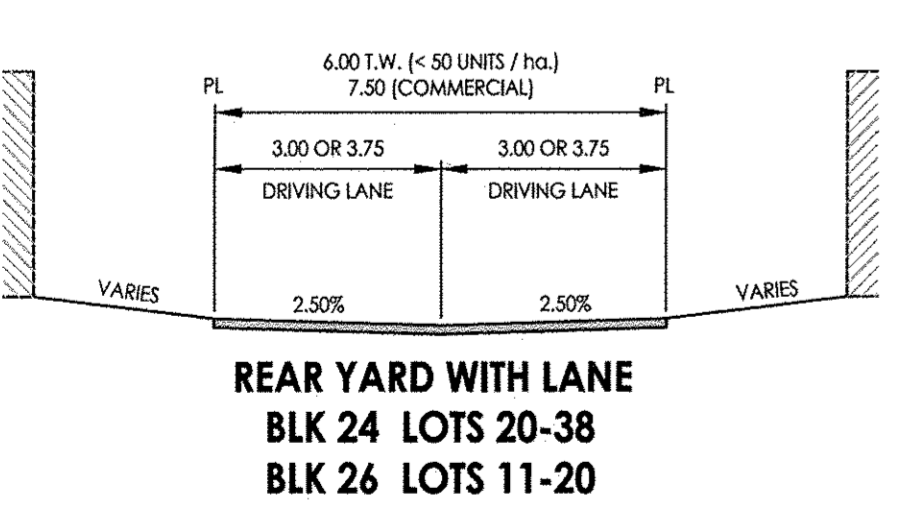
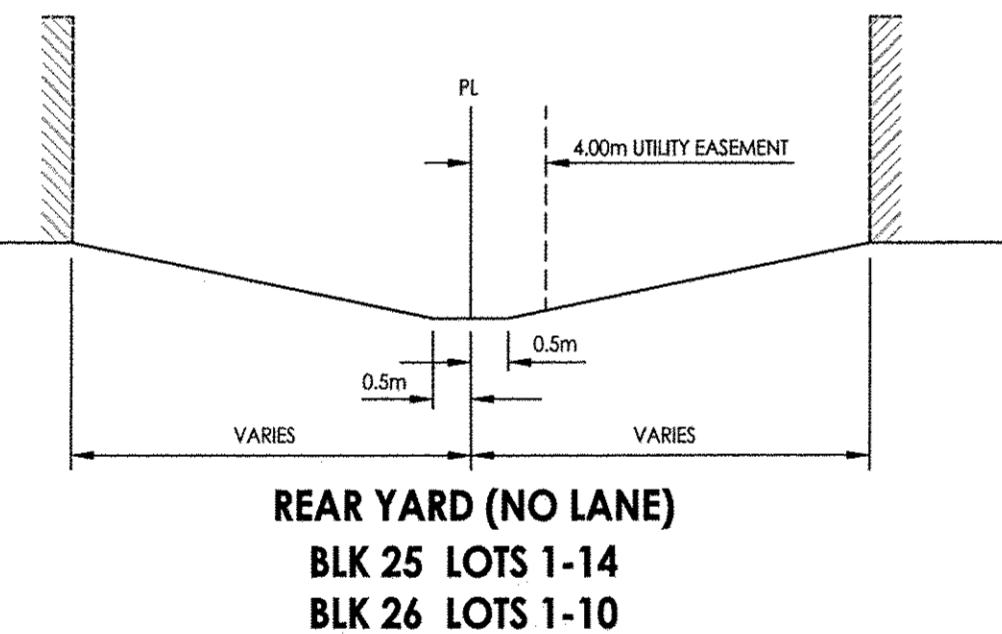
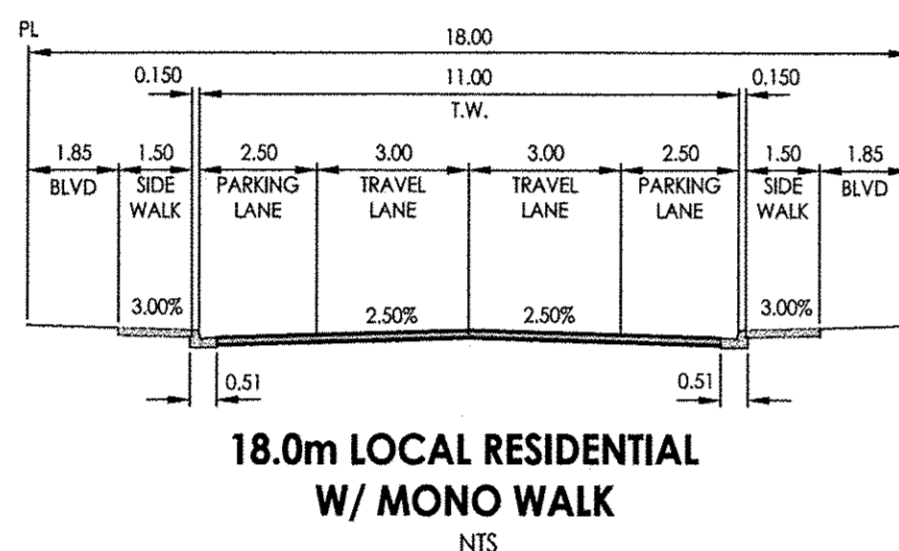
- CURB BOXES SHALL BE LOCATED:
- a) 2.00m FROM THE SIDEYARD PROPERTY LINE FURTHEST FROM THE DRIVEWAY ALONG THE FRONT PROPERTY LINE OR AS NOTED.
 - b) CORNER LOTS - 2.00m FROM THE INTERSECTION OF THE EXTENSION OF THE FRONT PROPERTY AND THE SIDEYARD PROPERTY LINE FURTHEST FROM THE DRIVEWAY ALONG THE FRONT PROPERTY LINE.
 - c) LOTS 11-20 BLK 26 AND LOTS 20-38 BLK 24, LOCATED AT CENTRE OF LOT (AS NOTED BY THE CURB BOX LOCATION SYMBOL) ALONG THE FRONT PROPERTY LINE.
- SEWER CONNECTIONS TO BE 150mm Ø PVC
 WATER CONNECTIONS TO BE 25mm Ø COPPER (TYPE K).

NOTE

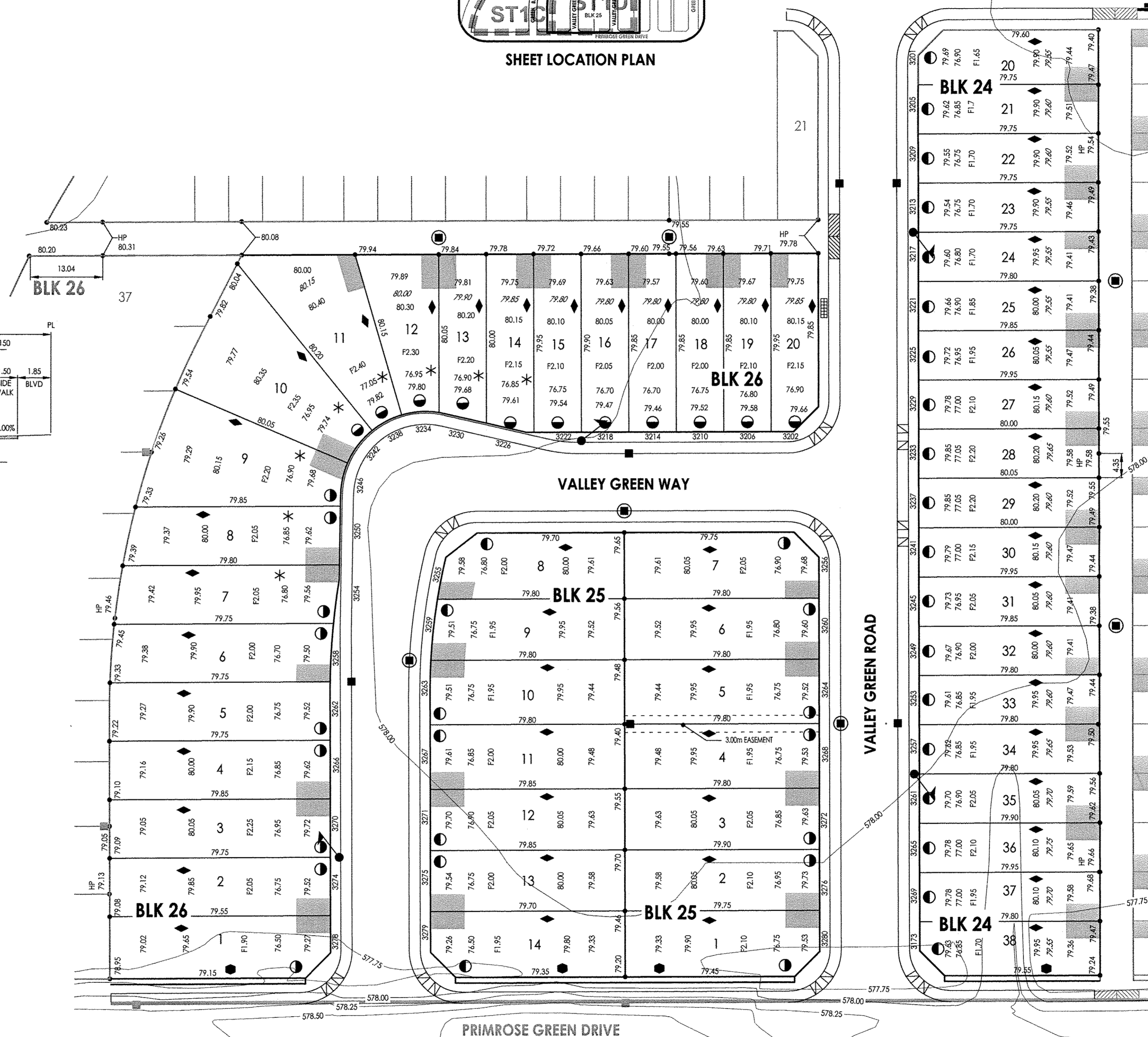
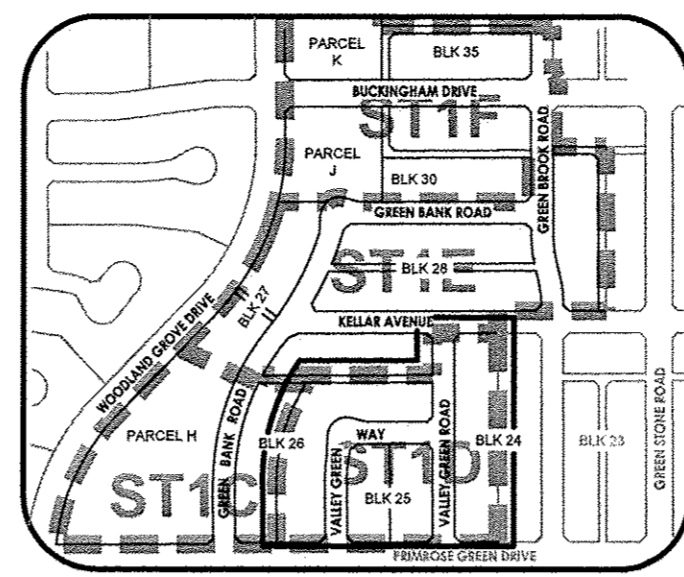
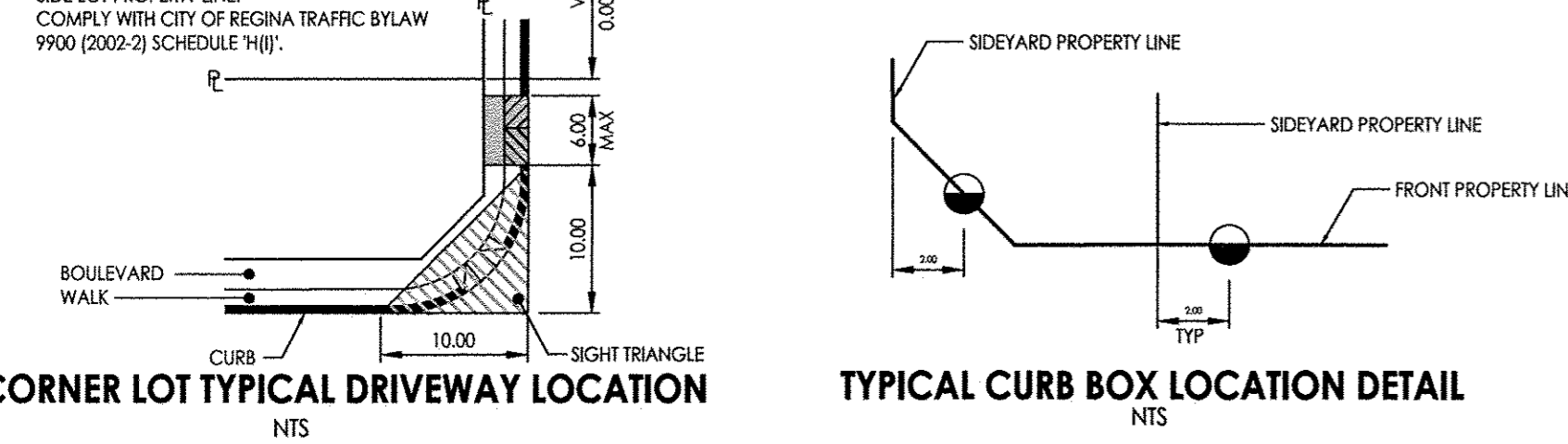
IF BASEMENT EXCAVATION DOES NOT EXCEED THE FILL SHOWN ON THE BUILDING GRADE PLAN, THE BOTTOM OF THE EXCAVATION MUST BE TESTED TO DETERMINE THE BEARING CAPACITY. THIS TEST WILL BE DONE BY CONTACTING TERRA DEVELOPMENTS INC. 306-924-0445.

BENCH MARK

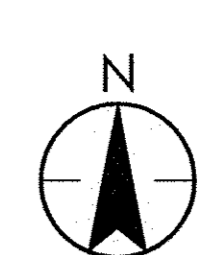
78VT257 GEODETIC DATUM
 NORTHING 5384478.594, EASTING 533657.461
 ELEVATION 575.923
 AUGER PIPE WITH BRASS CAP, AT NORTHEAST CORNER OF SECTION 3-17-19, 0.9 KM SOUTH OF HIGHWAY 33, 3.1M WEST OF CENTRE LINE OF SECTION ROAD, 20CM BELOW GROUND LEVEL, ESTABLISHED BY SASKATCHEWAN CENTRAL SURVEY AND MAP.



CORNER LOT DRIVEWAYS ARE NOT TO ENCRoACH THE 10.00m SIGHTLINE AS MEASURED FROM THE FACE OF CURB ADJACENT TO THE SIDE LOT PROPERTY LINE. COMPLY WITH CITY OF REGINA TRAFFIC BYLAW 9900 (2002-2) SCHEDULE "H1".



CITY OF REGINA
Design Reviewed
Date: *Apr 19 2007*
Per: *[Signature]*
Development Services Department
Development Engineering Branch



STANTEC CONSULTING LTD.
 400 - 1820 Hamilton Street
 Regina, SK Canada S4P 2R8
 Tel. 306.781.6350
 Fax. 306.359.0233
 www.stantec.com

Copyright Reserved

The Contractor shall verify and be responsible for all dimensions. DO NOT scale the drawing - any errors or omissions shall be reported to Stantec without delay. The Copyrights to all designs and drawings are the property of Stantec. Reproduction or use for any purpose other than that authorized by Stantec is forbidden.

Utility Disclaimer

Location of existing utilities as shown may not be exact or may be incomplete. Contractor to verify exact location of all utilities with appropriate authorities prior to starting construction. The developer and the consultant assume no responsibility for any utilities damaged during construction.

Legend

- SIDEWALK WITH BARRIER CURB
- SIDEWALK WITH ROLLED CURB
- BARRIER CURB
- ROLLED CURB
- 575.00 ORIGINAL CONTOURS
- P BURIED SASKPOWER LINE
- G BURIED GAS LINE
- T BURIED SASKTEL LINE
- SASKPOWER TRANSFORMER
- SASKPOWER PEDESTAL
- SASKTEL PEDESTAL
- CATV PEDESTAL
- CATCHBASIN/MANHOLE
- CATCHBASIN
- FIRE HYDRANT
- STREET LIGHT
- SUPER MAIL BOX
- HP HIGH POINT
- SERVICE LOCATION
- SERVICE STUBBED 3.00m INTO PROPERTY

Notes

- ALL MATERIALS AND CONSTRUCTION TO COMPLY WITH CURRENT CITY OF REGINA STANDARD CONSTRUCTION SPECIFICATIONS AND DETAILS.
- ADD 500mm FOR GEODETIC ELEVATION.

Revision	By	Appd.	YY.MM.DD
B FOR APPROVAL	JF	KC	17.03.31
A FOR 90% REVIEW	JF	KC	16.12.15

Permit-Seal

Association of Professional Engineers & Geoscientists
 of Saskatchewan
 CERTIFICATE OF AUTHORIZATION
 STANTEC CONSULTING LTD.
 Number C0969
 Permission to Consult held by:
 Discipline: *14716* Sig. *[Signature]*
 Mun. Eng. 14716



Client/Project

TERRA DEVELOPMENTS INC.
 THE TOWNS
 PHASE 1 - STAGE 1D
 SITE SERVICES
 Regina, Saskatchewan

Title
LOT GRADING

Project No. 1131-01210	Scale
Drawing No. C-2	Sheet 2 of 8
	Revision 0